

SmartLinkMonitor user manual

Create a new database and connect to it

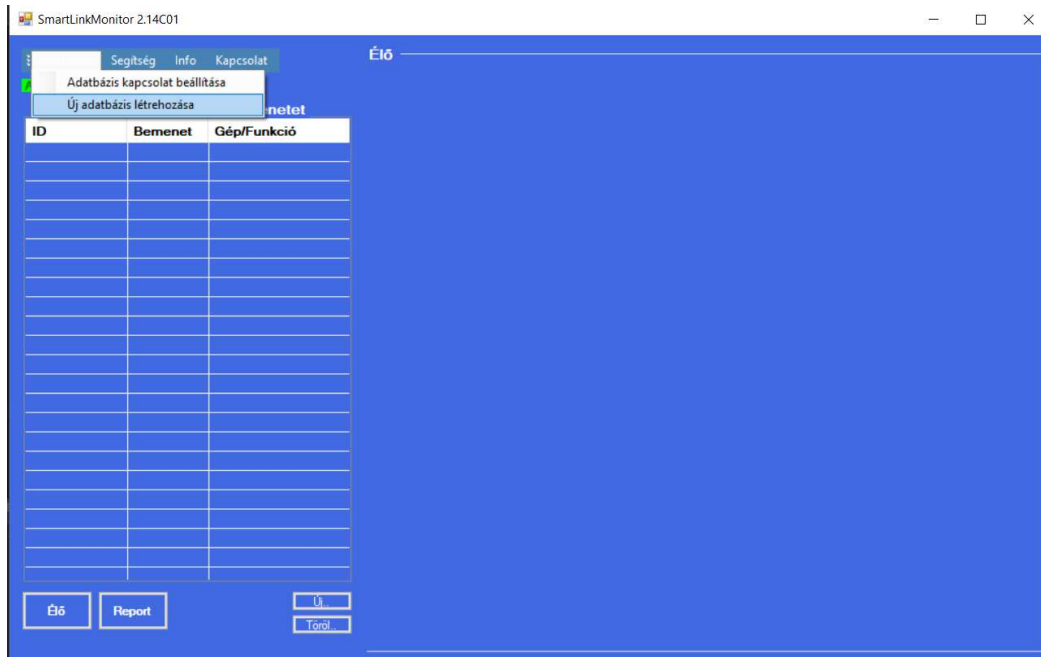
The SmartLink system stores the collected data in a MySQL database created on the fish user's server. This must be created after the first installation of the SmartLink Monitor program.

To create it, you need a MySQL server connected to the local Wifi network (always-on server, NAS, etc.) and a MySQL server program (e.g. phpMyAdmin).

The server must have a FIX IP address!

Once we have verified that we have a server and a MySQL client running on it (phpMyAdmin is recommended), let's create the database:

- 1) Press the Top menu -> Database -> 'Create new database' button.



1) Make new database

Új MySQL adatbázis létrehozása

MySQL szerver IP címe: 192.168.1.100 1

MySQL szerver PORT: 3306 2

Felhasználónév: root 3

Jelszó: ***** 4

Új adatbázis neve:

Adatbazisom_neve 5

Adatbázis létrehozása

- 1: Enter the FIX IP address of the server (where the phpMyAdmin client is installed).
- 2: Enter the port number used by phpMyAdmin (you can find this on the phpMyAdmin interface, but it is typically 3306 or 3307. If you are using a router, the port forwarding must also be appropriate!).
- 3: The main (or other, fully authorized) username specified in the phpMyAdmin program.
- 4: The password for the user.
- 5: Database name: You can enter anything you want, but avoid long names, special characters, etc.

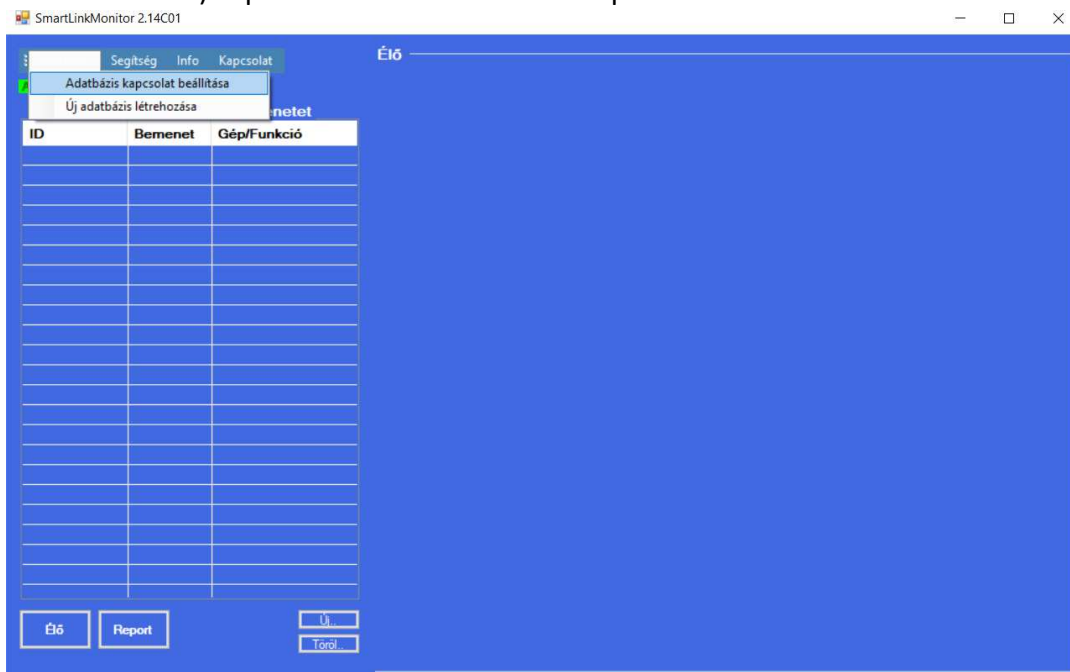
Write down the name of the database so that we can connect to it!

We created the new, empty database on our server with the 'Create Database' button.

Connecting to the new database

If you have an existing database, connect to it when you first start the program.

1) Top menu -> Database -> Set up database connection



MySQL szerver IP: 192.168.1.100

MySQL felhasználó: root

MySQL jelszó: *****

Adatbázis neve: Adatbázisom_neve

Port: 3306

Kapcsolódás teszt

OK Mégse

Enter the server IP address, username and password, database name and port number.

Press the 'Connection Test' button. If all the data has been entered correctly and the specified database exists on the server, the message 'Connection Successful' will appear. In case of an error, the message 'Connection Failed' will appear. In the latter case, check the correctness of the entered data or the existence of the database on the server.

After a successful connection, press the OK button to save the connection data.

Restart the software!